

Troop 615
Welcome Meeting

Welcome & Introductions

- Scoutmaster: Doug Burdett
- Troop Committee Chair: Scott Reichel
- Assistant Scoutmasters
- Committee Members

Troop Leadership

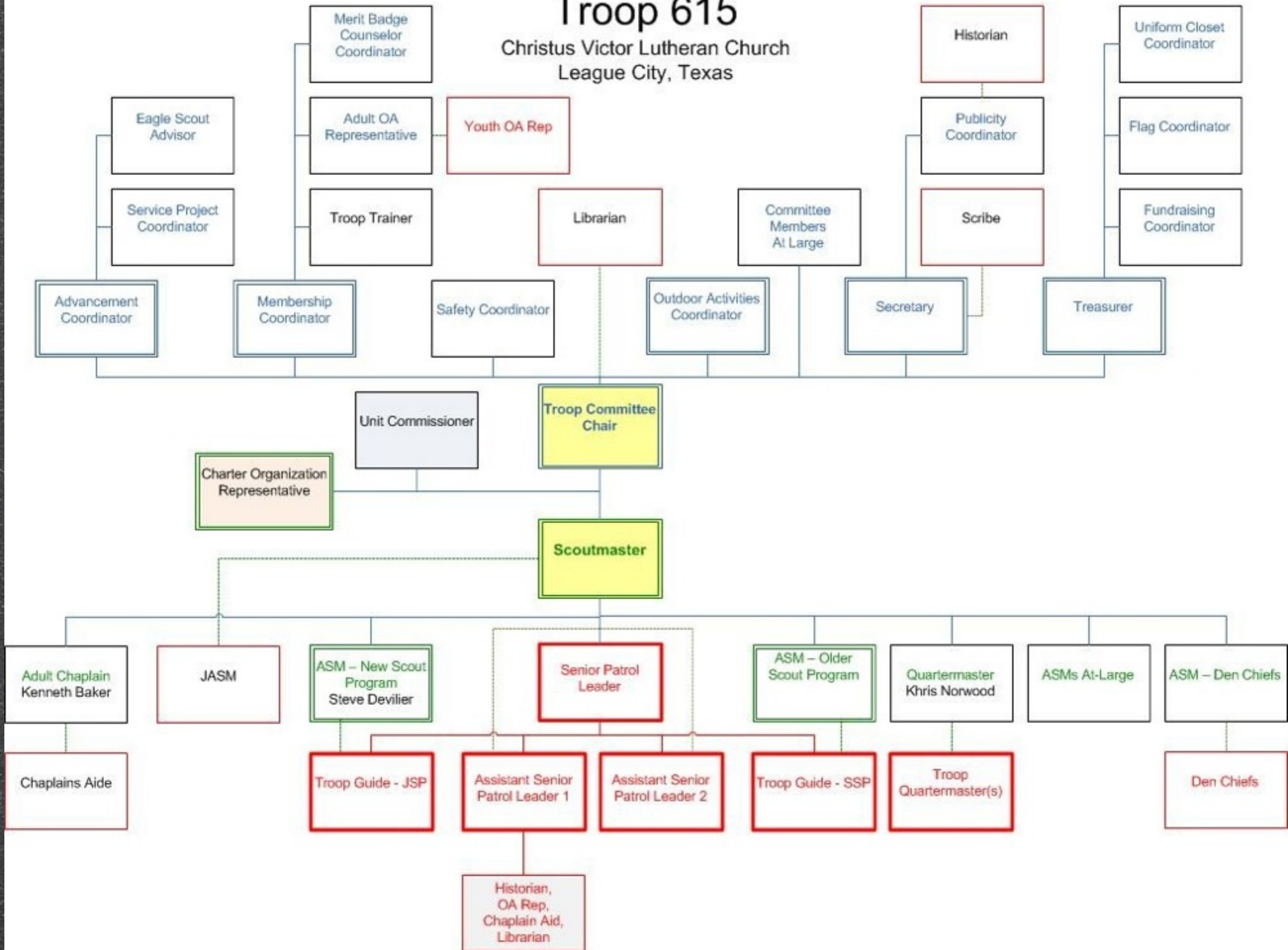
- SPL - Senior Patrol Leader
- ASPL - Assistant SPL
- TG-JSP - Troop Guide Junior Scout Pgm
- TG-SSP - Troop Guide Senior Scout Pgm
- QM - Quartermaster
- PL - Patrol Leader
- APL - Assistant Patrol Leader

Troop Leadership

- Scribe
- Librarian
- Historian
- Chaplain's Aide
- Instructor

Troop 615

Christus Victor Lutheran Church
League City, Texas



Uniform

- CLASS A (Field or Official Uniform)

- Tan Shirt, Troop Neckerchief, Woggle

- Troop Hat, Scout Pants, Scout Belt, Scout Socks

- CLASS B

- Troop Polo

- Troop Hat, Scout Pants, Scout Belt, Scout Socks

- CLASS C

- Troop T-Shirt

- Troop Hat, Scout Pants, Scout Belt, Scout Socks

New Scout Package

- Cost is \$100

- Includes:

Class B Polo

615 Patch

Class C T-Shirt

Epaulets

Neckerchief

Scout Handbook

Woggle

Handbook Cover

Troop Hat

Recharter

Patrol Patch

Recharter

- Scouts will recharter with the Troop
- Due to Troop by Dec. 1
 - Transfer Paperwork
 - Medical Forms
 - Adult YPT

Advancement

📌 Scout

📌 Tenderfoot

📌 2nd Class

📌 First Class

📌 Star

📌 Life

📌 Eagle

Goal: First Class in First Year

Advancement Process

- Rank Requirements
 - Troop Meetings
 - Campouts
- Scoutmaster Conference
- Board of Review

Merit Badges

- Get a Blue Card from the Advancement Coordinator or Scoutmaster.
- Scoutmaster signs the card BEFORE you start the merit badge.
- You should meet with the counselor for the merit badge BEFORE starting on the merit badge.

Patrols

- 4 Existing patrols

- Spartans

- Mongoose

- Thundercats

- Golden Aces

ISA

(Individual Scout Account)

- Every scout has an ISA.
- We encourage scouts to Pay They Own Way and can earn money for their account through various fundraisers.
- Recommended minimum balance for an active scout is \$25.

ISA

(Individual Scout Account)

- The account is used to pay for
 - campout fees and food
 - summer and fall camps
 - high adventure trips
 - recharter

Campouts

- The Troop uses TroopWebHost to signup for Campouts and other events.
- There is usually a nominal fee for each campout to help cover the fuel and campout fees.
- There is also a grub fee to pay for food. Currently this is \$13 per a typical weekend campout.

Campouts

- Adults

- No campout fee.

- Fuel reimbursed by receipt if transporting scouts other than your own.

- Grub fee does apply.

Campouts

- Adults (continued)
 - Parents attending are required to take the online YPT (Youth Protection Training)
 - Parents are encourage to attend one campout a year in addition to any campouts designated as family campouts.

Grubmaster Process

- The scout from a patrol that gets the food (grub) for a campout.
 - This position should rotate around and all scouts need to do this in order to advance.
- The grubmaster receives a budget per person to spend for the weekend and will be reimbursed up to that amount.
- The scouts that signed up for the campout will have the grub money deducted from their ISA Account even if they do not attend.

Grubmaster Process

- Example

- Budget \$13 per scout for the weekend

- 7 scouts from patrol attending

- Total budget for campout is \$91

Grubmaster Process

- The grubmaster brings receipts to the treasurer the meeting following the campout and receives either a check or a credit to his ISA.
- Amount is divided among scouts signed up for campout and deducted from their ISA.

Communication

• Text

• <https://www.remind.com/join/t615>

• Text @t615 to 469-518-7362

• Troop Website

• <http://troop615.boy-scouts.net>

Troop 615 League City



[Lock-In @ LCUMC](#)
(08/22/14)



[Eagle COH - Patrick Unbehagen](#)
(07/27/14)



[Summer Camp](#)
(07/13/14)



[Northern Tier High Adventure Canoe Trek](#) (06/20/14)



Introduction to TroopWebHost	Troop Policies & Procedures Manual	Spring/Summer Weekend Personal Gear List	Fall/Winter Weekend Personal Gear List	PLC Report Booklet
This tutorial introduces TroopWebHost to new Scouts and their parents.	Learn how the troop operates.	What should a Scout bring on a Spring/Summer weekend campout?	What should a Scout bring on a Fall/Winter weekend campout?	This booklet contains forms youth leaders need to present their reports at the PLC meeting.



The troop traveled to Cockrell River Camp in El Rancho Cima to participate in the Summer Camp program in July 2014.



Text Alerts

The troop now has a text alert system. To subscribe, simply text @t615 to (469) 518-7326. I encourage all scouts and parents to subscribe

[Webelos Parent/Scout Meeting](#)
(11/03/14)

[Troop Meeting](#)
(11/03/14)

[Safety At Sea 2014](#)
(11/08/14)

[Troop Meeting](#)
(11/10/14)

[Dakota Spenrath's Eagle COH](#)
(11/16/14)

[Troop Meeting](#)
(11/17/14)

[Troop Committee meeting](#)
(11/18/14)

[Camp Edgewood](#)
(11/22/14)

[Troop Meeting](#)
(11/24/14)

Communication

- TroopWebHost (TWH)
 - Sign up for events on Troop Calendar
 - Check ISA balances
 - Check Advancement
 - Photo Gallery
 - Troop Rosters
 - Send E-Mails

Communication

- Google Calendar

- Subscribe to TexasTroop615

December Lock-In

- December 5 - 6
- Greater Life Church
- Immediately following the crossover
- Ugly Mug

December Lock-In

• What To Bring

• Cot or Sleeping Pad

• Sleeping Bag / Pillow

• Change of Clothes

• Toiletries (Toothbrush, toothpaste, deodorant, etc.)

January Campout

- 📌 January 9 - 11
- 📌 Brazos Bend
- 📌 Meal Planning January 5
- 📌 **VERY IMPORTANT** Campout for new scouts
- 📌 Arrive at church by 6:00 PM on 9th

Summer Camp

- The Importance of Summer Camp
 - Camp Experience
 - Merit Badges
 - Fun
 - Only opportunity for some merit badges
 - Shooting Sports only done at Camp

FALL/Winter Camp

- Friday or Saturday before Thanksgiving
- Returning the Wednesday before Thanksgiving

Basic Camping Gear

- Scouts need to provide their sleep system (tarp, pad and sleeping bag).
- Clothes / Jacket / Rain gear
- Flashlight (2) and extra batteries
- Toiletries
- Camp chair
- Water Bottle

Sleeping Pads

(Insulation and Cushioning)

- Closed Cell
 - Therm-a-Rest Z-Lite
 - \$25 - \$30
 - REI, online
 - Coleman Rest Easy
 - \$9.99
 - Academy



Sleeping Pads

(Insulation and Cushioning)

- Open Cell - Self Inflating
 - A number of brands \$30 and up
 - Available at REI, Academy, online

Sleeping Bags

The Degree Rating & The Correction Factor

• Sleep Style

• Acclimatization

• Food Intake

• Hydration

• Tiredness

• Bag Fit

• Dampness

• Body Movement

• Wind Protection

• Storage

Sleeping Bags

- How to add warmth
 - Liner adds 10 - 15 degrees
 - A good pad and tarp is essential in cold weather
 - Add a tuque or stocking cap
 - Add thermals
 - Clothes and socks for sleeping only

Q & A